



McKinney Roughs Nature Park Day Camp Emergency Action Plans

IN CASE OF EMERGENCY CALL 911

Emergency Contact Information

- **Emergency Preparedness Coordinator:** Lindsay Robbins | 512-578-4802 | Lindsay.Robbins@LCRA.org
- **Park Manager:** Aaron Friar | 512-730-8072 | Aaron.Friar@LCRA.org
- **Summer Camp Director:** Nicholas Cowey | 512-730-8004 | Nicholas.Cowey@LCRA.org
- **Assistant Summer Camp Director:** Katie Larson | 512-730-8018 | Katie.Larson@LCRA.org
- **LCRA Public Safety Dispatch:** 512-730-8911

Community Resources

- **Bastrop County Emergency Management Coordinator:** James Altgelt | 512-303-7000 | 512-581-4022 | james.altgelt@co.bastrop.tx.us
- **Ascension Seton Health Center Bastrop:** 512-304-0313 | 630 West State Hwy 71 Bastrop, TX 78602
- **EMS/Fire Department:** Bastrop Co Fire Dept. | 512-308-0086 | 116 Stoney Brook Dr., Cedar Creek, TX 78612
- **Bastrop County Sheriff:** Sheriff Maurice Cook | 512-549-5100 | maurice.cook@co.bastrop.tx.us



General

Day Camp

McKinney Roughs Nature Park Day Camp (MKR Day Camp) does not provide any overnight offerings. We do **not provide overnight accommodations** onsite. Campers nor staff occupy the property or MKR buildings outside of daylight hours.

- Because MKR Day Camp does not operate any overnight cabins within a floodplain, ladder roof access is not applicable to MKR Day Camp as contemplated by Section 265.36 of 25 TAC, Chapter 265, Subchapter B.
- Illuminated evacuation routes are not necessary at MKR Day Camp as contemplated by Section 265.31, Chapter 265, Subchapter B, as MKR Day Camp does not operate any overnight cabins. Staff nor campers are present on property outside of daylight hours.
- Because MKR Day Camp does not operate any overnight cabins within a floodplain, the floodplain safety requirements contemplated by Section 762.002 and Section 141.0091(a) of the Health and Safety Code are not applicable to MKR Day Camp.

Emergency Preparedness Coordinator (EPC) Responsibilities

- Creating, maintaining, and updating the Emergency Action Plan for McKinney Roughs Nature Park Day Camp.
- Designing, implementing, training and documenting emergency training.
- Conducting routine inspection of camp facilities for safety hazards and maintaining operational emergency equipment.
- Collaborating with local emergency management, law enforcement and health officials to align camp plans with community protocols.
- Acting as lead coordinator during a crisis, managing incident command, reporting to authorities and overseeing evacuation or mitigation efforts.
- Ensuring compliance with all applicable Texas Youth Camp laws and ensuring parental communication in accordance with the applicable EAP.

EAP Distribution

- **Bastrop County Emergency Management**
 - MKR Day Camp's EAPs will be on file with the Bastrop County Emergency Management Office.
 - Any time this document is revised or updated, the EPC will ensure that the Bastrop County Emergency Management Coordinator will be notified by email correspondence.
- **Guardian(s) of Prospective and/or Enrolled Campers**
 - MKR Day Camp's EAPs will be available to the public on our website and in our registration packet.
- **Camp Staff**



- MKR Day Camp's EAPs will be given to each employee at the beginning of staff training in a folder that also includes camp curriculums and schedules.
- Copies of MKR Day Camp's EAPs will be located in the camp office.
- Every company vehicle associated with camp will have a copy of MKR Day Camp's EAPs.

Emergency Alert System

- Emergency Alerts and Instructions will be delivered to campers through the Public Address System. (e.g., Evacuation, Shelter-in-Place, Lockdown, Lightning Alert, Tornado Warning, etc.)
- The Public Address System will consist of a 100-watt bullhorn, which is sufficient to adequately alert all campers and staff of an emergency. This will be followed by the activation of the fire alarm pull station(s).
- When a fire alarm pull station is activated, wall mounted strobe lights will alert individuals with hearing impairment.
- Designated camp counselor with capable hearing will assist the evacuation of campers who are deaf and hard of hearing.
- Messages will be projected with use of a 100-watt bullhorn; thus, the alert system is operable without the reliance of the internet and must be initiated through human response. Redundant messaging will take place through staff text threads from the EPC.
- The EPC is responsible for maintaining the Emergency Alert System and making announcements. In the event that the EPC is not available, the responsibility of maintaining and managing the Emergency Alert System will fall to the Camp Director or designated individual.

Training

- **Staff Training**
 - **Instruction Provided By:** EPC, Camp Director, Assistant Camp Director and Parks Operations Manager
 - **Timeframe:** nine days
 - **Curriculum:** Each counselor will receive a folder that includes training curriculums, Emergency Action Plans, schedules, and additional helpful information.
 - **EAP Training:** Staff will be introduced to, trained and tested on the MKR Day Camp EAP's. They will sign an acknowledgement at the end of training to acknowledge their understanding. This acknowledgement will be filed with other staff documentation in the camp binder.
 - **Documentation:** Staff training curriculum can be found in the camp binder located in the office. All staff certifications, acknowledgements and personal information can also be found in the camp binder. The Camp Director is responsible for collecting and maintaining all training records.
- **Camper Safety Training**



- **Instruction Provided By:** EPC, Camp Director, Assistant Camp Director, Lead Counselors
- **Training Overview:**
 - On first morning of weekly camp session, Camp Director or designee will instruct campers on:
 - Emergency Alert Signal: 100-watt portable bullhorn
 - Behavioral expectations when signal is heard: Stop activity, line up with group, be quiet and listen for instruction from counselor.
 - Where to go if separated from group: McKinney Roughs Nature Park Visitors Center
 - Evacuation procedures: Point out building exits, evacuation routes and muster zone.
 - EPC is responsible for providing developmentally appropriate training.
- **Camp Tour:** On the first morning of camp, campers will be taken on a tour by their counselor. This tour will cover:
 - Camp buildings
 - Evacuation routes
 - Muster zone
 - Expectations for staying with counselors at all times and following all rules and policies.

Internet

- 1) MKR Day Camp maintains a redundant internet connection from its providers Alpheus Communications L.P., Astound Business Solutions, and University of Texas, ITS, Office of Telecommunication Services to support emergency communications. LCRA provides and maintains their own redundant end-to-end fiber network as evidenced by Texas Senate Bill 632 which recognizes LCRA as a provider of reliable broadband for rural communities. Both the primary and secondary internet connections will be monitored by the EPC. Proof has been submitted along with our license application.

Evacuations

In the case of a NWS Notice or other emergency where camp must be evacuated:

- EPC will use the Emergency Public Address System to alert Counselors and campers that an evacuation is necessary.
- EPC will contact 911 and notify local emergency resources by phone.
- Counselors will lead campers to the designated Muster Zone.
 - Campers with access and functional needs will be escorted one-on-one by designated camp staff.
- Maps showing evacuation routes to designated muster zone are posted at all exit doors in the camp building and are attached at the end of this Document.
- Evacuation Muster Zones are:



- Primary – employee parking lot
- Secondary – overflow parking lot
- When in muster zones, each counselor will initiate a headcount using their daily attendance roster and communicate the results to the EPC by phone or in person.
- If emergency requires camp staff and campers to leave camp property, campers will load the buses directly from the muster zone.
- Camp staff and campers will evacuate to Cedar Creek High School at 793 Union Chapel Rd., Cedar Creek, TX 78612
- Park Manager and counselors will notify parents of our plans by phone and/or texts.
- EPC or designee will call Public Safety Dispatch, local authorities and Bastrop County Emergency Management to inform them of our plans and/or to request support.

Floodplain Notice

- The following is posted on our website at lcraparks.com:
 - “A portion of McKinney Roughs Nature Park Day Camp’s property is located in the floodplain of the Colorado River. While portions of the park property are adjacent to the river, none of the camp buildings or structures are located within the designated floodway. The elevation of the day camp campus is 230 feet higher than the river and over 2,600 feet in distance.”
- The following statement is included on the Camper Medical Information & Release Form with a signature line for parents to acknowledge that they have received the Floodplain Notice:
 - “I understand and accept that a portion of the McKinney Roughs Nature Park Day Camp’s property is located in the floodplain of the Colorado River. I understand and accept that while portions of the property are adjacent to the Colorado River, none of the camp buildings or structures are located within the designated floodway.”
- The Camp Director is responsible for ensuring that the signatures of notification are collected from the parents in the registration process.
- A FEMA map showing the relation of camp building to the floodplain can be found at the end of this document.

Fire Emergency EAP

Procedures

Initial Response

- **Sound the Alarm**
 - If a fire is detected, a staff member will activate the fire alarm and/or use the Emergency Alert Signal/Public Address System to alert everyone on property.
- **Notify Emergency Services**
 - EPC or designee will call 911 immediately, providing the camp's name, address, as well as location and severity of the fire.



- **Evacuate to Muster Zone(s)**
 - When alerted of a fire, counselors should:
 - Stop all activity
 - Instruct campers to line up
 - Counselor will perform an initial headcount of campers using daily attendance roster
 - Counselor will lead campers to muster zone
 - If in a camp building, counselors will lead campers to the nearest safe exit (as listed on the evacuation map posted at exterior doors) and to the designated muster zone.
 - If wild land fire, counselors will lead campers to designated muster areas from their activity location.
 - EPC, Camp Director and/or designee should sweep all rooms in building leading anyone found to the nearest safe exit (as listed on the evacuation map posted at exterior doors) and to the designated muster zone.
 - **Designated Muster Zone**
 - Primary - employee parking lot
 - Secondary - overflow parking lot
- **Conduct a Headcount**
 - Each counselor will perform a secondary headcount using the daily attendance roster in the muster zone and report the findings to the EPC in person or by phone.
- **Contain the Fire (if safe)**
 - Use fire extinguishers only if the fire is small, manageable and there is no risk to personal safety or the safety of others and you are trained to do so.
- **First Responder Support**
 - Assistant Director or designee will head to front gate to meet emergency personnel.
 - Assistant Director or designee will escort first responders to location of fire.
 - Counselors and campers will stay in muster zone until first responders give further instructions.
 - No one is to re-enter camp buildings until cleared by fire officials and instructed by EPC.
- **Evacuation**
 - If wildland fire requires evacuation from property, EPC will instruct Counselors & Campers to follow Evacuation procedures as listed on page 5.

Procedure to Notify and Communicate

- EPC and/or designee will call 911 immediately.
- EPC or designee will call Manager and/or LCRA Parks VP to update them on the situation.
- Once cleared by LCRA Parks VP or designee, EPC, Park Manager, and/or designee will notify parents/guardians of the situation and any impact on camp



operations by telephone or text using the registration roster. If follow-up is needed, parents will receive texts every 30 minutes until the emergency situation has been resolved.

- EPC will call Bastrop County Emergency Management Coordinator.

Natural Disasters EAP

Shelter-in-Place/Muster Zones

- If shelter-in-place is required (e.g., tornado, severe thunderstorm), campers will shelter in camp restrooms, the learning center, San Saba dormitory and Llano dormitory. Campers and staff on a second story will shelter in the restrooms on the first story of their building.
- If evacuation is required, campers will muster in the primary muster zone (employee parking lot.)

Weather Alert System

- MKR has and maintains a NOAA weather radio in the main office monitored by reception staff. EPC carries a wireless NOAA weather radio on their person.
- EPC maintains NOAA radio by:
 - Programming to the correct S.A.M.E. code
 - Ensuring antenna is clear and undamaged
 - Daily testing
 - Ensuring a battery backup is available

Monitoring Safety Alerts

- EPC/Camp Director and Assistant Director will monitor weather conditions using NOAA Weather Radio, radar services, weather apps, LCRA Hydromet, LCRA Flood Operations Notification Service, local news, the Bastrop County Emergency Management Office and the Bastrop County Sheriff's Office.
 - All staff should be vigilant and report to EPC/Camp Director if they receive an alert on their phone.
- In the event of a safety alert that warrants Emergency Action Plan procedures, EPC will sound the Emergency Alert Signal/Public Address System.
- At the sound of the Emergency Alert Signal, Counselors will respond according to the Emergency Action Plans.

Procedures

Procedure for Severe Weather or Lightening

- In the event of Severe Weather or Lightening, EPC will instruct counselors to move all campers indoors until EPC issues an all clear.
 - Park Manager and counselors will notify parents of our plans by phone and/or texts. If follow up is needed, parents will receive texts every 30 minutes until the emergency situation has been resolved.
 - EPC or designee will call Public Safety Dispatch, local authorities, and Bastrop County Emergency Management to inform them of our plans and/or to request support



Procedure for Tornado Warning

- In the event the National Weather Service issues a Tornado warning
 - The EPC or designee will use the Emergency Alert Signal/Public Address System to inform counselors and campers of the Tornado Warning.
 - EPC will instruct counselors to lead their campers to shelter-in-place in the camp building restrooms.
 - Counselors will perform a headcount in the shelter-in-place location (each restroom) using their daily attendance roster and report results to the EPC in person or by phone.
 - Camp staff and campers will shelter-in-place until an “all clear” is given by EPC.
 - Do not resume activities until cleared by emergency services and instructed by EPC.
 - Park Manager and counselors will notify parents of our plans by phone and/or texts. If follow up is needed, parents will receive texts every 30 minutes until the emergency situation has been resolved.
 - EPC or designee will call Public Safety Dispatch, local authorities, and Bastrop County Emergency Management to inform them of our plans and/or to request support.

Procedure for Flash Flood Warning

- In the event the NWS issues a Flash Flood Warning
 - The EPC or designee will use the Emergency Alert Signal/Public Address System to inform counselors and campers of the Flash Flood Warning
 - The MKR Day Camp learning center is outside the floodplain and floodway and will serve as the shelter-in-place/muster zone until buses are in place for evacuation.
 - Counselors will lead campers to the learning center from their activity areas.
 - Once in the learning center, counselors will perform a headcount using their daily attendance roster and report results to the EPC in person or by phone.
- In the event of a Flash Flood Warning, campers will load the buses directly from the Learning Center.
 - Camp staff and campers will evacuate to Ceder Creek High School at 793 Union Chapel Rd., Cedar Creek, TX 78612
 - Park Operations Manager and counselors will notify parents of our plans by phone and/or texts. If follow up is needed, parents will receive texts every 30 minutes until the emergency situation has been resolved.
 - EPC or designee will call Public Safety Dispatch, local authorities, and Bastrop County Emergency Management to inform them of our plans and/or to request support

Procedure to identify and account for campers

- Stop all activity.
- Lead campers to the designated shelter-in-place/muster area.



- Counselors will perform headcount using daily attendance roster and report findings to EPC in person or by phone.
- Emergency Preparedness Coordinator and/or designee will oversee a sweep of all activity areas in camp leading anyone found to the designated shelter-in-place/muster area.

Procedure to Notify and Communicate

- EPC and/or designee will call 911 immediately if emergency services are necessary.
- EPC or designee will speak with Manager and/or LCRA Parks VP to update them on the situation.
- Park Operations Manager and counselors will notify parents/guardians of the situation and any impact on camp operations by phone and/or texts using the registration roster. If follow up is needed, parents will receive texts every 30 minutes until the emergency situation has been resolved.
- EPC will call Bastrop County Emergency Management Coordinator

Transportation EAP

Procedures

- Campers will not ride in or on any vehicles other than the designated camp shuttle buses or vans.
- Should an emergency occur involving a vehicle off-site (i.e shuttle or field trip vehicles), MKR Day Camp transportation staff will call 911 to report the emergency to first responders and contact EPC.
- If an incident occurs involving a camper, the medical officer and the EPC should be immediately notified.
 - The first trained responder on scene initiates first aid/CPR as required to their level of training.
 - If injuries require the assistance from emergency personnel, the EPC will call 911.

Procedure to Notify and Communicate

- EPC and/or designee will call 911 immediately if emergency services are necessary.
- EPC or designee will speak with Manager and/or LCRA Parks VP to update them on the situation.
- Park Operations Manager and counselors will notify parents/guardians of the situation and any impact on camp operations by phone and/or texts using the registration roster. If follow up is needed, parents will receive texts every 30 minutes until the emergency situation has been resolved.
- EPC will call Bastrop County Emergency Management Coordinator

Aquatic EAP

Lifeguard Training

All lifeguards are trained using American Red Cross curriculum and standards.



Prevention

PFDs- Campers and camp staff within 10 feet of a waterfront are required to wear properly fitted, inherently floatable, US Coast Guard Approved Type III Personal Floatation Devices.

Swim Tests- When at the pool, campers may swim without a PFD only if they pass the nationally recognized swim test. Pool is staffed with certified lifeguards.

Procedures

Procedures for response

In the event of an aquatic emergency that involves a neck or spinal injury or accidental drowning:

- Lifeguards will blow whistles three times to alert of an emergency.
- EPC or designee will immediately call 911.
- **Provide Care**
 - Lifeguard(s) and/or trained rescuer(s) initiates CPR or first aid to their level of training until EMS arrives.
 - Assistant Director or designee will head to front gate to meet and escort emergency personnel to the location of the aquatic emergency.
- **Crowd Control**
 - All non-lifeguard trained staff will evacuate campers from away from the site of the aquatic emergency
 - Counselors will perform a headcount using the daily attendance roster and update the EPC of the results in person or by phone.
 - Non-lifeguard staff will monitor campers and keep campers clear of the area.
- **Transport and Notification** – If EMS transports the injured individual, Camp Director or designee will follow behind emergency vehicle or will ride along if permitted.

Procedure to Notify and Communicate

- Trained rescuer and/or designee calls emergency medical services (EMS) and informs the EPC in person or by phone.
- EPC and/or Park Manager will call parents/guardians of affected camper using the registration roster to inform them of the nature of the injury, what care was provided, where the camper is being transported, and contact information for the medical facility.
- EPC or designee will call Manager and/or LCRA Parks VP to update them on the situation.
- EPC will notify parents/guardians of the situation and any impact on camp operations by phone and/or texts. If follow up is needed, parents will receive texts every 30 minutes until the emergency situation has been resolved.
- EPC will call Bastrop County Emergency Management Coordinator

Communicable Disease Epidemic EAP Muster Zone



- Symptomatic individuals will isolate in the medical room.
- Non-symptomatic individuals will remain in regular activity.

Procedure

Initial Response

- If a communicable disease is suspected:
 - The individual will be seen by the camp medical officer for care.
 - Medical officer will wear appropriate PPE dependent on presentation of symptoms when caring for campers.
 - The camp medical officer will identify the individual's symptoms and the possible illness.
 - If the illness is not communicable or a danger to the rest of the camp community, the individual will receive necessary care and return to regular activity.
 - If the illness cannot be identified or is identified as a communicable disease, the camper will be isolated in the medical room. The camp medical officer will update the EPC by phone or in person. The EPC will contact the guardian(s) of the infected individual by phone.
 - The individual will be removed from the camp community by their guardian(s) and taken to receive further medical attention. When a diagnosis is confirmed, this information will be given to the camp.
- If a communicable disease is confirmed:
 - Staff and campers who were in contact with the infected individual will be checked for symptoms.
 - The areas used by the infected individual will be cleaned and disinfected by staff wearing appropriate PPE (e.g., gloves, eye protection, face mask, etc.).
 - Communication will be sent to families with information about the illness and next steps by phone and/or text using the camp registration roster.
 - Cleaning and disinfection procedures will be reviewed and adjusted in accordance with the communicable disease response procedures and product manufacturer guidelines.
 - Camp programming will continue for any unaffected staff members, and campers.
 - If other individuals begin to show symptoms, they will be immediately removed from the camp community and isolated in the medical room as soon as possible to receive further medical attention.
 - As the outbreak progresses, the EPC and Camp Director will make decisions regarding the feasibility of continuing camp.
- Control measures, including possible physical distancing measures, will be in place until the risk of continued exposure is eliminated. The EPC will be in contact with local health officials for assistance in this area. The number of



new cases will eventually start to decline assuming control measures are effective.

Communication

- The Camp Medical Officer will contact the EPC, who will call the family of the affected individual to coordinate transportation from camp and further care.
- Camp staff will communicate to campers and parents by phone and/or texts, informing them of the screening process, safety measures, and the Communicable Disease EAP.
- The EPC will communicate with camp administrator(s) and medical services by phone.
- EPC will call Bastrop County Emergency Management Coordinator:

Missing Camper EAP

Procedure

Initial Response

- Counselor will verify the camper is missing by conducting a headcount using daily attendance roster in the group or area where the camper was last seen.
- Gather information about the missing camper and communicate to EPC by phone immediately.
 - Name, age and physical description.
 - Last known location and time.
 - Clothing and any distinguishing features.
 - Any known medical conditions or special needs.
- After EPC has been notified, send collected information in text thread to all staff.
- EPC will check the camp buildings immediately. If child is not found within five minutes, EPC will initiate missing camper protocol.

Missing Camper Protocol

- EPC will direct counselors to lead all campers to muster in Learning center
- Counselors will perform headcounts using daily attendance rosters to ensure all campers are present.
- EPC will assign staff to monitor campers in building.

Search

- EPC will assign staff to search the following areas systematically:

Assignment	Assigned To
Search Area 1 – Area last seen	
Search Area 2 – Learning center and main office	
Search Area 3 – San Saba and Llano dormitories	
Search Area 4 – Courtyards and Ridge Trail	
Search Area 5 – Parking lots	



- Maintain communication via radios or cell phones.

Escalation

- If the camper is not found within 15 minutes, escalate the situation:
 - EPC will notify local authorities by telephone (911 and Public Safety Dispatch).
 - EPC or designee will contact the camper's parent/guardian by telephone and will text with updates every 30 minutes.
- Assistant Director or designee will meet first responders at front gate and direct them to the EPC to be updated on situation.
- EPC will provide authorities with all gathered information as well as pertinent medical information pulled from camper's registration.
- Camp staff will follow the instructions of emergency responders to assist in the continued search.

Communication

- Emergency Preparedness Coordinator or designee will call 911 if situation escalates.
- Emergency Preparedness Coordinator will update Manager and/or LCRA Parks VP.
- EPC or designee will notify parents/guardians of the situation and any impact on camp operations by phone and/or texts. If follow up is needed, parents will receive texts every 30 minutes until the emergency situation has been resolved.
- EPC will call Bastrop County Emergency Management Coordinator:

Severe Injury, Severe Illness, Serious Accident, or Fatality EAP

Procedures

Procedure for Response

- Any staff member witnessing or discovering the severe injury, severe illness, serious accident or death of a camper or camp staff must immediately call or designate someone to call emergency services. They will also notify the EPC and/or Park Manager.
- The first trained responder on scene initiates first aid/CPR as required to their level of training.
- Maintain privacy and keep the scene calm.
 - Clear the surrounding area of campers.
 - Staff not involved in the incident response should lead other campers to the Learning Center and perform a headcount using their daily attendance roster.
- Assistant Director or designee will meet Emergency Personnel at the front gate and will escort first responders to the scene of the incident.
- Present camp staff will assist EMS as needed under their direction.
- If EMS transports an individual, the Camp Director and/or designee will follow behind emergency vehicle or ride along if permitted.

Procedure to Notify and Communicate



- First staff on scene and/or designee will call 911 immediately.
- EPC or designee will call parents of affected individual to inform them of the nature of the injury, what care was provided, where the camper is being transported, and contact information for the medical facility.
- EPC or designee will call Manager and/or LCRA Parks VP to update them on the situation.
- EPC or designee will notify parents/guardians of the situation and any impact on camp operations by phone and/or texts. If follow up is needed, parents will receive texts every 30 minutes until the emergency situation has been resolved.
- EPC will call Bastrop County Emergency Management Coordinator

Unauthorized Individual EAP

All authorized individuals in designated camp areas will be accompanied by a staff member.

Procedure

Initial Observation

- If an unidentified individual (person not on staff or not accompanied by staff) is observed in designated camp areas:
 - Maintain a safe distance.
 - Do not approach the individual unless it is safe to do so.
 - Observe and note their appearance, behavior and location.

Notify Leadership

- Immediately inform the EPC or designated authority by telephone.
- Provide the following details:
 - Description of the individual (e.g., clothing, height, distinguishing features).
 - Location and direction of movement.
 - Any observed behavior (e.g., suspicious actions, loitering).

Secure the Area

- If the individual is near campers:
 - Calmly and discreetly move campers to a safe location.
 - Option 1 – move campers to Learning Center, away from windows and lock doors.
 - Option 2 – lead campers back conference room in main office building

Engage (If Safe and Authorized)

- If safe and authorized by the EPC:
 - Approach the individual with at least one other staff member (never approach with campers present or leave campers unattended to engage individual).
 - Politely ask the purpose of their visit.
 - Inform them that visitors are not allowed on camp property while camp is in session and escort them off property.



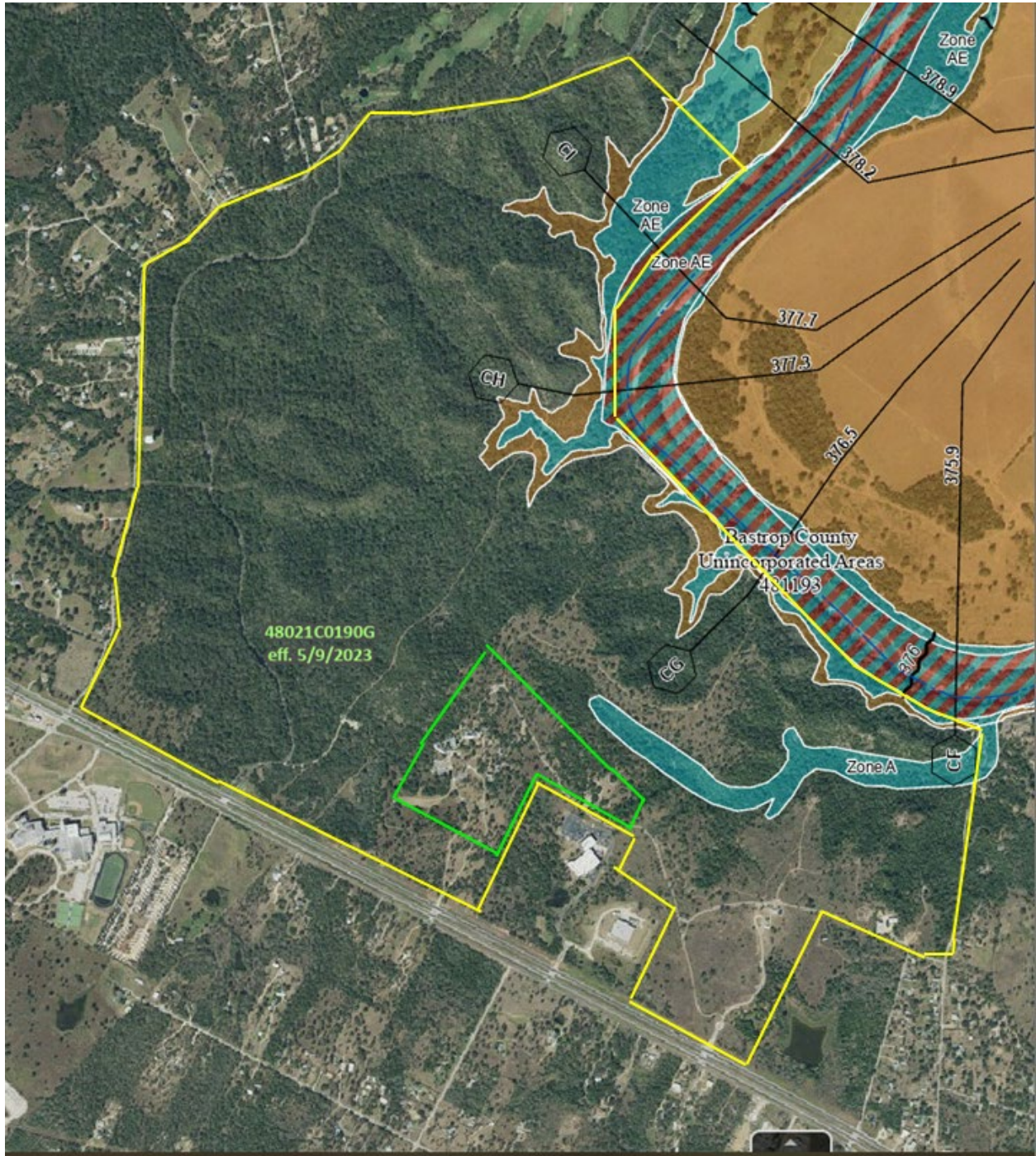
- Do not escalate the situation; remain calm and professional.



Escalation

- If the individual refuses to leave, behaves aggressively, or poses a threat:
 - Call local law enforcement immediately with all relevant details.
 - Counselors will lead campers to shelter-in-place.
 - Option 1 – move campers to learning center building, away from windows and lock doors.
 - Option 2 – lead campers back conference room in main office building

Procedure to Notify and Communicate

- EPC and/or designee will call 911 if situation escalates.
- EPC or designee will speak with Manager and/or LCRA Parks VP to update them on the situation.
- EPC and/or designee will notify parents/guardians by phone or text of the situation and any impact on camp operations using the camp registration roster.
- EPC will call Bastrop County Emergency Management Coordinator



-  Property Boundary
-  Day Camp Campus Boundary



Evacuation Routes are color coded for each building at McKinney Roughs Day Camp.

